

# **LEHIGH UNIVERSITY**

**EMERGENCY MEDICAL SERVICE**

**610 – 758 – 4200**



**Annual Report 2007**

**Proudly Serving the Lehigh Community**

Written and Compiled By:  
Alexander W. Bruner, *LUEMS CAPTAIN, EMT-B*  
Martin Razo, *LUEMS EMT-B*

## Table of Contents:

<b>Executive Message</b>	<b>3</b>
<b>Mission</b>	<b>4</b>
<b>General Operations</b>	<b>5</b>
<b>Call Volume</b>	<b>6</b>
<b>Community Service</b>	<b>7</b>
<b>Response Times</b>	<b>8</b>
<b>Change in Nature of Calls</b>	<b>9</b>
<b>Educational Opportunities</b>	<b>10</b>
<b>Year Round Service</b>	<b>10</b>
<b>How does LUEMS Compare to Peer Institutions?</b>	<b>11</b>
<b>LUEMS Management and Advisors</b>	<b>12</b>
<b>2006 &amp; 2007 End of Year Rosters</b>	<b>13</b>
<b>Contact Information</b>	<b>15</b>



Front Cover: City of Bethlehem, LUEMS, and LUPD responding to an emergency at Mountain Top Campus

## Executive Message

August 19, 2008

The dedicated members of Lehigh University EMS (LUEMS) are proud to provide quality emergency medical care and a rapid response to emergencies 24 hours a day, seven days a week while classes are being held. We represent a critical link between the campus community and regional emergency providers, as we are able to reach the scene faster and initiate care when it is needed most.

2007 was a landmark year in the history of LUEMS. For the first time since our foundation in 1991 we continued our operations during the summer session. Eleven members worked diligently to provide the same 24 hour service provided during the regular school year. Despite the low call volume, I would mark the summer as a rousing success as we made one giant leap towards providing uninterrupted year round service.

Students, Faculty, and Staff made 242 calls for help in 2007, ranging from dislocated shoulders to cardiac emergencies, and from sore throats to seizures. While this is not our highest annual call volume ever, the most significant statistic is the decline in the number of intoxicated calls. Over the course of the year, we saw nearly a 15% decline in the number of intoxicated patients compared to 2006. Such a significant decrease in this type of call combined with the 2% total call volume increase shows a significant increase in campus awareness, as more and more people are calling us for help with other injuries and illnesses.

In addition to responding for emergency calls, we have continued providing standby services at football games, hockey games, and rugby games, Greek Week events, UP sponsored events, Sundaze, and many other campus activities. These services play an important role in the community, as they offer trained emergency providers to Lehigh affiliated clubs and activities at a fraction of the cost of hiring an outside agency. These standby services also represent our only means of raising club funds aside from the budget provided by the Student Senate and support granted by the Lehigh University Police Department. In 2007 we also donated 15 hours of standby time to Relay for Life and The Wonderful World of Sports, which provided athletic opportunities for South Side Kids.

2007 also saw a more complete integration of non-Lehigh resources in our regular training sessions. These trainings varied from classes on patient extraction from vehicular accidents with the aid of Se-Wy-Co Firefighters to a course on "Assisting the Paramedic" taught by medics from Bethlehem Township EMS, which focused on allowing a Basic Life Support EMT better help a Paramedic in treating a patient with Advanced Life Support Techniques.

Growth of our membership numbers has continued at an astonishing rate. In 2005, we had 24 members and 10 EMTs. In 2006 we had 54 members and 24 EMTs. At the end of 2007, we had an astonishing 92 members and 42 EMTs. We continue to maintain a strong presence in the Northampton Community College EMT course, and expect our numbers to grow further as we increase our campus awareness.

As I approach my last semester at Lehigh, I can't help but look back and marvel at the dedication of our members in the last few years. Not only have we maintained the high standards set by those that came before us, but we have made a commitment to grow and continually improve the service we provide to the Lehigh Community. These are students who have promised that no matter what time of day or night, no matter what the weather or how much homework they have, *someone* will be there to answer the call for help.

Sincerely,  
Alexander Bruner, EMT-B  
Captain, LUEMS 2008

***Mission:***

*The purpose of this organization shall be to aid and benefit humanity whenever and wherever required; to answer emergency calls; provide emergency care; render aid to the sick, injured, and disabled; and to save life regardless of race, color, or creed.*

## Lehigh University EMS: General Operations

Lehigh University Emergency Medical Services (Hereafter referred to as LUEMS) exists to provide emergency medical care at the EMT-Basic Level without cost to the students, faculty, staff and community, which comprise the Lehigh family. This service is provided 24 hours a day, 7 days a week, during the academic year and summer sessions. LUEMS is a completely volunteer and student run organization. We are overseen by, and work closely with, the Lehigh University Police Department.

Lehigh EMS is a BLS QRS (Basic Life Support, Quick Response Service). While we do not transport our patients, we feel our contribution to pre-hospital care for Lehigh Community members is crucial. In EMS, healthcare providers strive for the "Platinum Ten," the term referring to the first, and most critical, ten minutes after an emergency has occurred. On average our response times for the 2007 year were 4 minutes or less, which allowed us ample time to assess, stabilize, and care for the patient until we could transfer patient care to the City of Bethlehem or Bethlehem Township Paramedics (ALS).

In addition to our daily services, LUEMS has been contracted to provide standby service for the safety of the Lehigh Community and its visitors at numerous University events. In general, LUEMS staffs Sporting and University events including: rugby, ice hockey, football and other high-risk sports, Sundaze, UP events, Greek Week events, and many others.

The LUEMS squad is divided into three levels of membership to ensure quality service to the community. With a focus on skill and leadership development, each level has defined requirements and members ascend only through the approval of the Executive Board.

**Observers:** These members are non-EMT's or EMT's in training who may only treat patients under the direct supervision of a higher level member (New members already holding PA EMT-B certification are required to run under the title Observer for a minimum of one calendar month in order to become acquainted with LUEMS and Lehigh's Campus.). Observers are generally responsible for assisting the EMT and Crew Chief as directed. All observers are required, at a minimum, to be CPR certified.

**EMT:** These members hold a current PA state EMT-B certification, are CPR certified, and are permitted to respond to emergencies and treat patients alone or with other LUEMS personnel. The EMT operates under the direction of the Crew Chief.

**Crew Chief:** These members hold all of the same certifications as the EMT member, but have also shown exceptional EMT-B knowledge, leadership skills, and generally have more field experience. The Crew Chiefs are appointed by the current Captain. The Crew Chief responds with and is ultimately responsible for the actions and safety of the Duty Crew while responding to emergencies. The Duty Crew is made up of one Observer, one EMT, and the Crew Chief.



Taken by Alex Bruner  
Fall 2007

## Call Volume

Since 2005, LUEMS call volume has maintained relatively the same, in the mid 200-250 range of number of calls per year. We contribute our amount of calls to our ever increasing presence on campus, University Events, and Standbys.

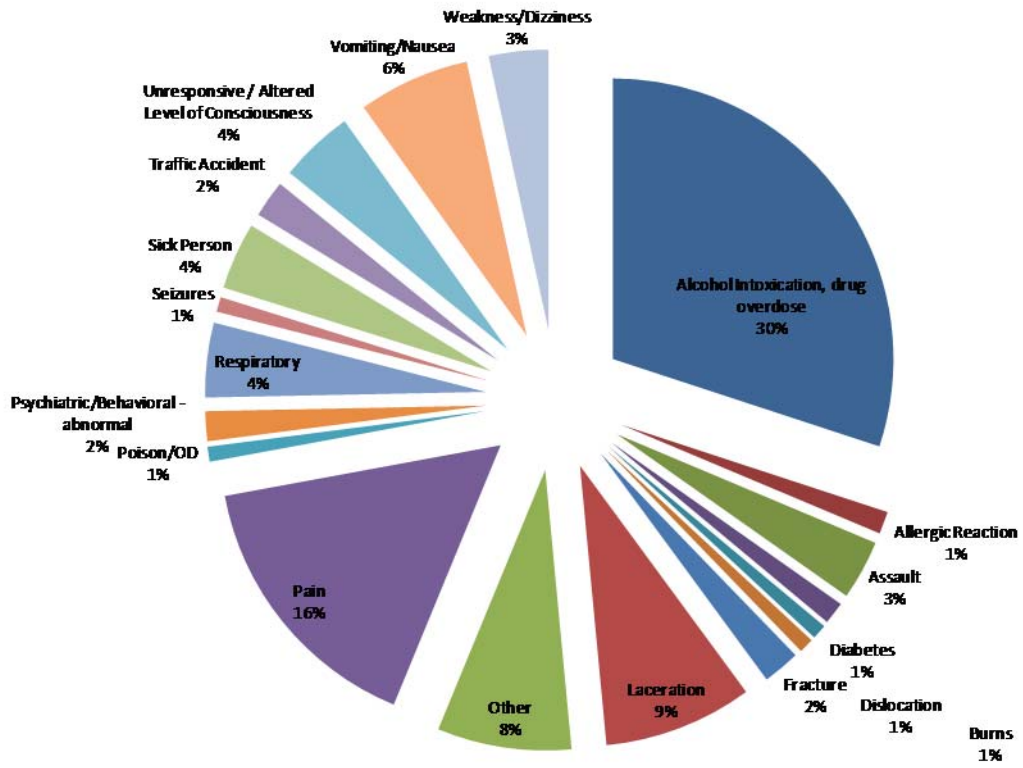
Total Calls for 2006: 237

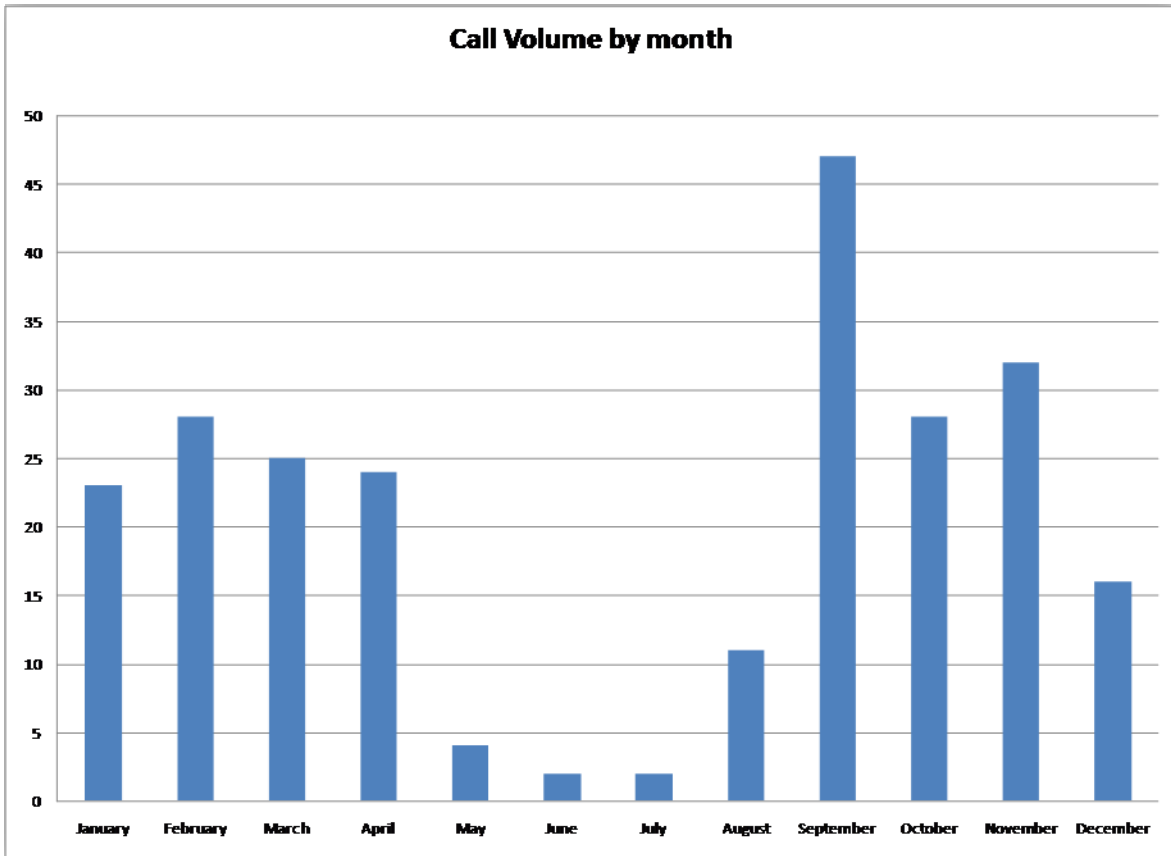
Total Calls for 2007: 242

Percent Change: 2.11% increase between 2006 and 2007

During the year, LUEMS has taken numerous continued measures to make the campus community aware of our services that are available free of charge. In the past, many community members were not aware of the role and function of LUEMS and therefore did not necessarily phone for immediate help. Through various lectures at fraternity houses and community groups such as gryphons, we feel our message and service are known widely across the campus. Efforts will continue through the coming years to keep this message widely known.

# Provider Impression





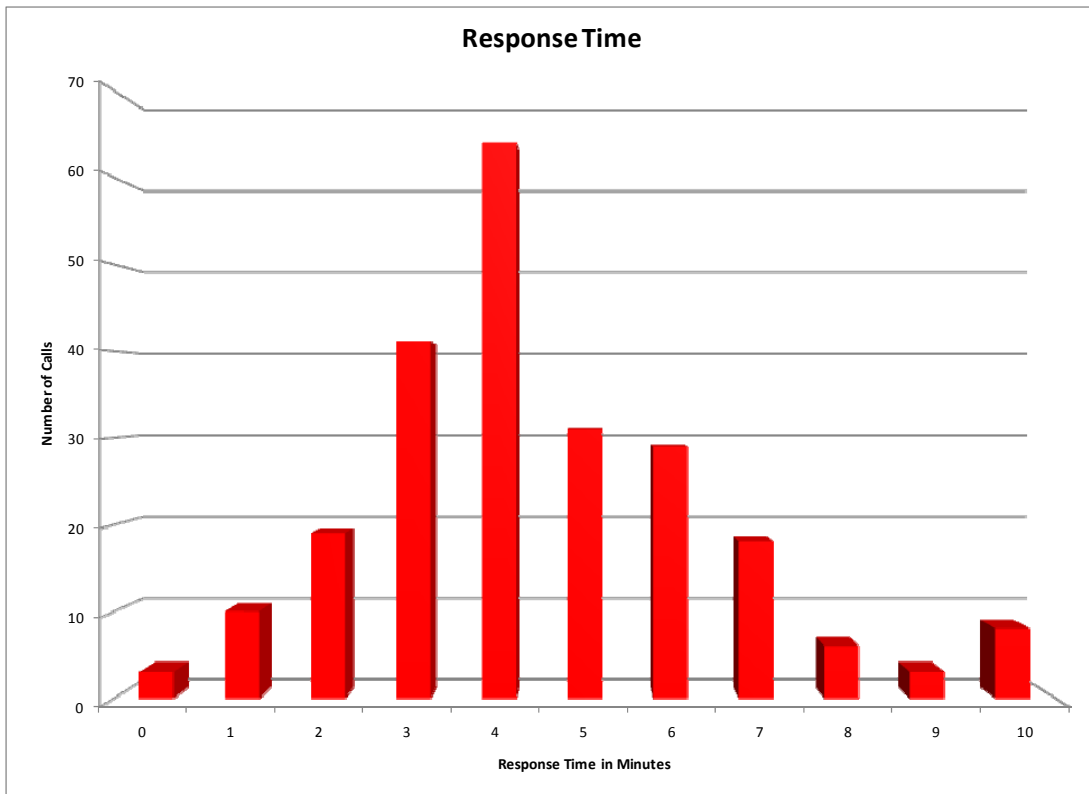
## Community Service

In our endeavor to better our community, LUEMS in the 2007 year contributed fifteen hours of free standby service. Standbys included twelve hours for Relay for Life on April 15, and three hours for “The Wonderful World of Sports” for Southside Bethlehem kids on April 22. In future years, LUEMS plans on contributing more hours to community service.



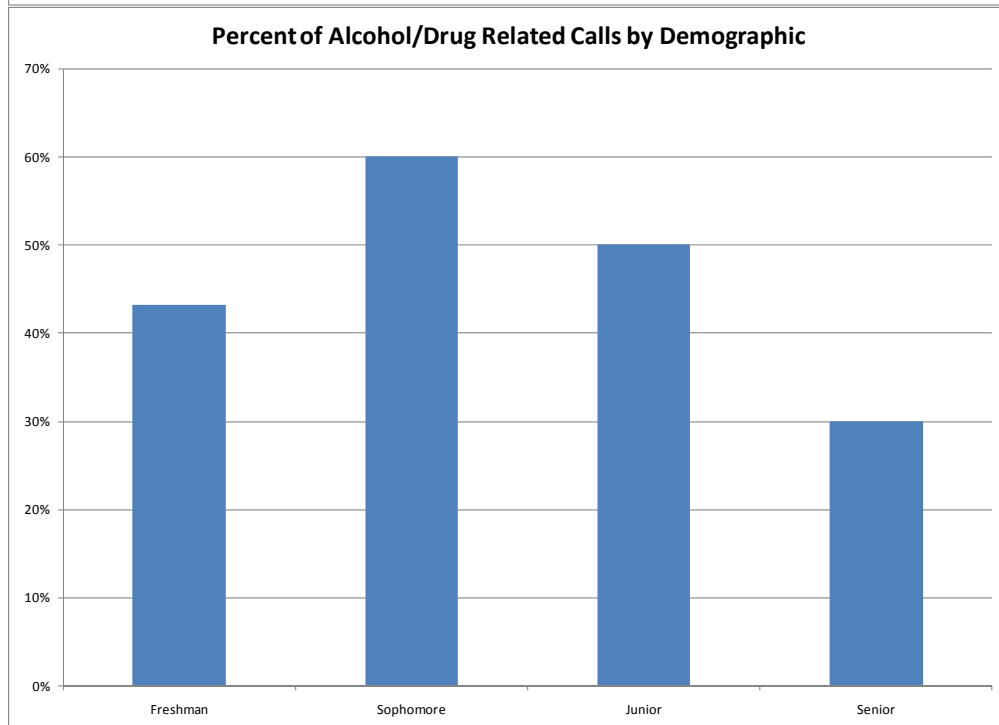
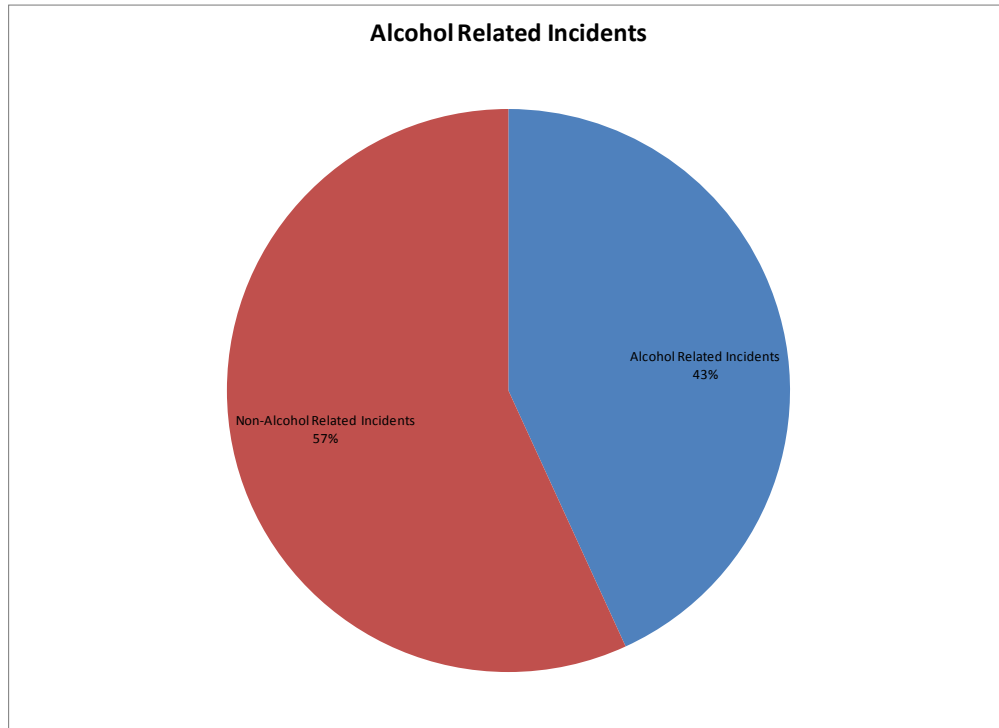
## Response Times

As stated before, LUEMS strives for the fastest response times possible in order to provide the earliest and best possible patient care. In 2007, 60% of all calls were responded to within 4 minutes, and 85% of all calls were responded to within 6 minutes. We contribute our strong response times to our diligent and dedicated LUEMS members who, despite our large campus, have always strived for quick responses to emergencies.



## Change in Nature of Calls

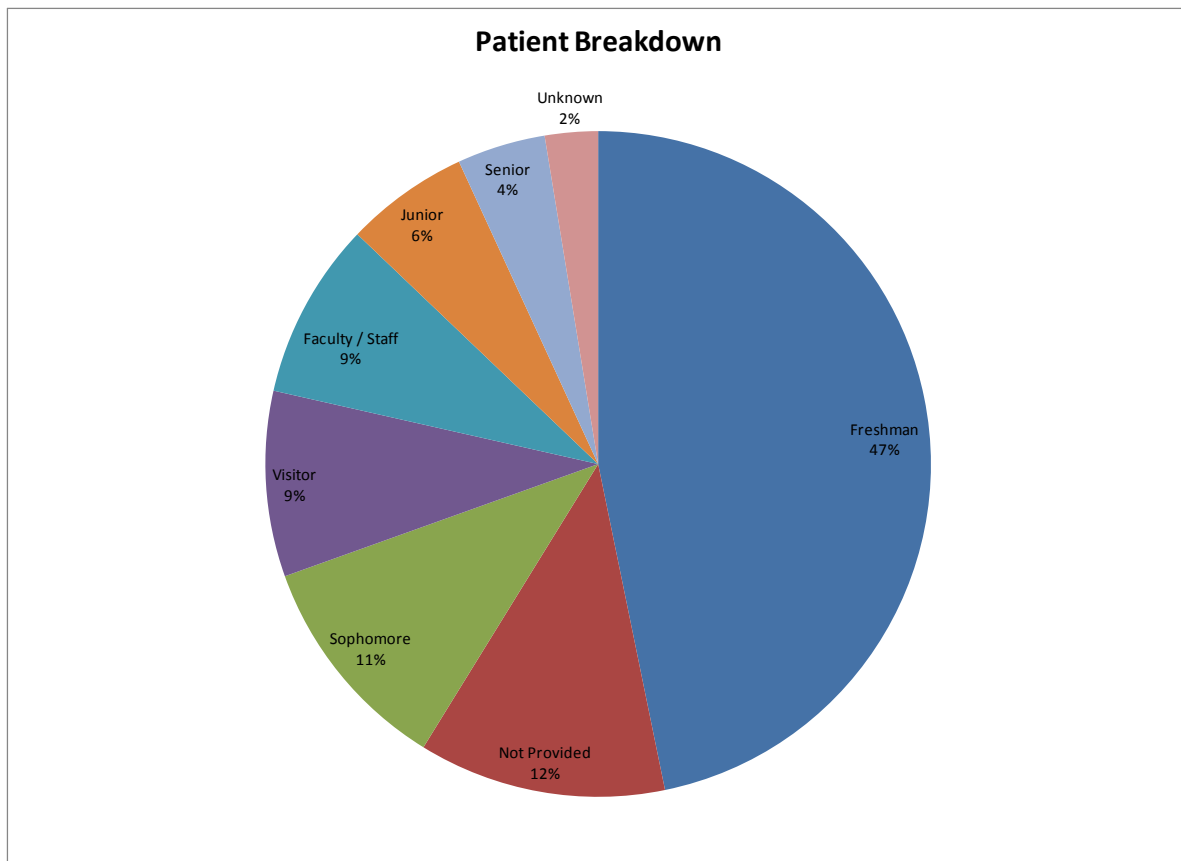
In recent years LUEMS has seen a great decrease in the percentage of Alcohol Related Incidents. This is due in large part to the increase in Lehigh Community's awareness of LUEMS and its services. While we do still deal with a number of Alcohol Related Incidents, we have now been called upon more frequently to respond to Non-Alcohol Related incidents, as reflected in our 11.8% increase in non-alcohol related calls.



## Educational Opportunities for Members

In partnership with our Medical Director, Dr. John Patterson from St. Luke's Trauma Center in Bethlehem, PA, LUEMS has an ER resident assigned to assist with training. Training for our members begins with a yearly EPI-PEN training, taught by qualified certified staff from St. Luke's Hospital, as well as regular training sessions, held at the end of each bi-monthly meeting, designed by our Training Lieutenant. These sessions have included review of airway management, trauma assessment, and motor vehicle extrication to name a few.

A number of our Observers have also taken hold of the opportunity to take the EMT-Basic course offered by Northampton Community College. Normally LUEMS has had members attend only the spring semester of the class. In 2007, however, we had students attending the class in the spring, summer, and fall semesters which led to a 75% increase in the number of certified EMTs between the spring of 2006 (24 EMTs) and the fall of 2007 (42 EMTs).



## Year Round Service

The summer of 2007 marked a major step towards our goal of being in service Year Round. With housing provided by Lehigh University's Residential Services, one Observer, six EMT-B's, and four Crew Chiefs stayed on call over the summer to provide coverage to members of the Lehigh Community during the summer sessions.

## How Does LUEMS Compare to Squads at Peer Institutions?

**Villanova University:** Villanova EMS provides coverage 365 days a year to the Villanova University community and the surrounding towns. They operate a transporting BLS ambulance. Their revenue is generated through numerous standbys at athletic events, graduation, and concerts.

**Duke University:** Duke EMS provides coverage 365 days a year to the Duke University community with expansion planned to cover the surrounding communities. Duke operates a 2004 Chevy Trailblazer as a Quick Response Vehicle.

**Cornell University:** Cornell University EMS is a certified New York State EMS Agency, providing service to Cornell University community and surrounding University owned properties. They operate a 2004 Chevy Suburban and respond to almost 500 calls per year.

**Muhlenberg College:** Muhlenberg College operates 24/7 during the school year with one 2002 Chevy Blazer and multiple bike units. They have their own housing complex where they operate their service out of, providing a quick response of the entire crew. In addition, they use the services of a golf cart at standby events. They operate a Pennsylvania Quick Response Service identical to the certification that LUEMS has.



City of Bethlehem, LUEMS, and LUPD at Iacocca Hall for an Emergency Call

## LUEMS Management and Advisors

### 2006 Executive Board

<b>Captain</b>	Jason Malinowski
<b>Lieutenant-Training/Operations</b>	Steve Lewis
<b>Lieutenant-Scheduling</b>	Mark Zakutansky
<b>Treasurer</b>	Christina Hajicharalambous
<b>Secretary</b>	Angela Pozza
<b>Observer Coordinator</b>	Katherine Lawrence

### 2007 Executive Board

<b>Captain</b>	Angela Pozza
<b>Lieutenant-Training/Operations</b>	Robin Camp
<b>Lieutenant-Scheduling</b>	Alexander Bruner
<b>Treasurer</b>	Ciara Lowery
<b>Secretary</b>	Jessica Adler

### Lehigh University Police Department Advisors (2006 & 2007):

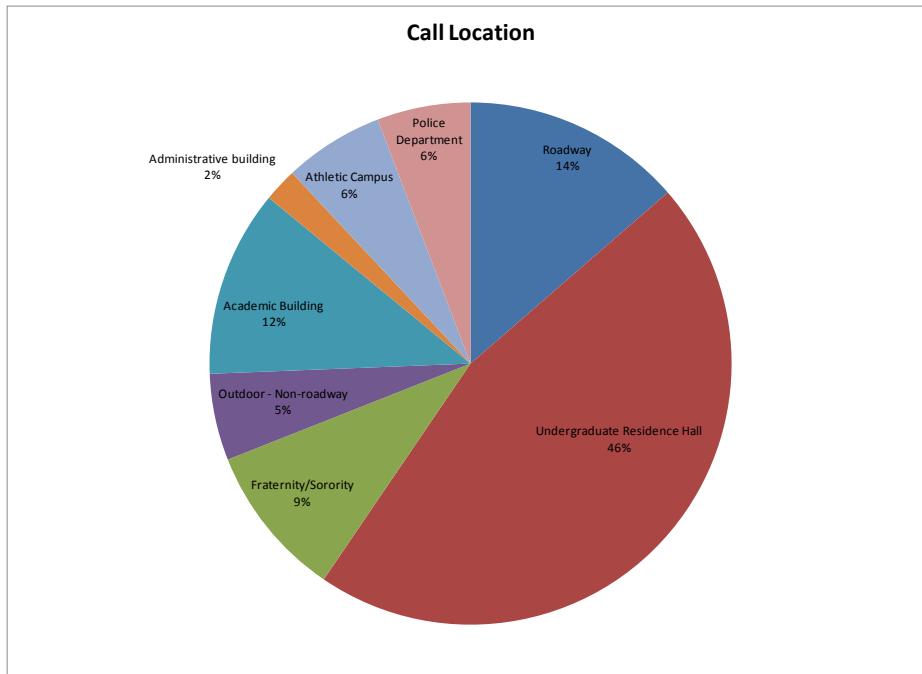
Chief Edward Shupp, *Chief of Police*  
Sergeant Christopher, *EMT-B, LUEMS Advisor*

### Medical Director (2006 & 2007):

John Patterson MD, *St. Luke's Hospital, Bethlehem, PA*  
Sharon Jacob DO, *St. Luke's Hospital, Bethlehem, PA*

### Industry Professionals and Advisors (2006 & 2007):

William Guth, *EMT-P City of Bethlehem EMS*



## 2006 Roster

Alexander	Senchak	EMT	Priya	Lyer	OBS
Ashish	Kapila	EMT	Bora	Baloglu	OBS
Tyler	Espenlaub	EMT	Jessica	Adler	OBS
Bhumi	Patel	EMT	Michael	Hall	OBS
Racine	Henry	EMT	Matthew	Berger	OBS
Josh	Grossman	EMT	Mike	Mazzei	OBS
Aalok	Shah	EMT	Sarah	Butner	OBS
Frank	Fabris	EMT	Nick	Kastango	OBS
Andrew	Stewart	EMT	Fletcher	Marks	OBS
Brett	Moses	EMT	Lauren	Anderson	OBS
Reid	Gronostajski	EMT	Ciara	Lowery	OBS
Katrina	Cokleski	EMT	Eileen	Mazochette	OBS
Kumar	Shah	EMT	Hieu	Nguyen	OBS
Lauren	Bacigalupo	EMT	Caitlin	Oksienik	OBS
Jason	Zeller	EMT	Jessica	Simberlund	OBS
Steven	Faschan	EMT	Laura	Petrini	OBS
Brian	Cheng	EMT	Tamara	Nisic	OBS
Nirarjah	Gerasekara	EMT	Heather	Axelrod	OBS
Susan	Sebelsky	EMT	Kester	Barrow	OBS
Adam	Winkler	EMT	Christopher	Basilico	OBS
Vera	Partem	OBS	Emily	Becker	OBS
Shawn	Amin	OBS	Noah	Benton	OBS
Robin	Camp	OBS	Sanjana	Bhatia	OBS
Matt	Moynihan	OBS	Kristin	Bierbauer	OBS

Adrian	Bruce	OBS	Amanda	Dilger	EMT
Matthew	Caban	OBS	Maura	Douglas	EMT
Michael	Chicco	OBS	Cynthia	Eakin	EMT
David	Chiles	OBS	Frank	Fabris	EMT
Amanda	Dilger	OBS	Steven	Faschan	EMT
Maura	Douglas	OBS	Victor	Fong	EMT
Victor	Fong	OBS	Christopher	Gauthier	EMT
Christopher	Gauthier	OBS	Jesse	Greenberg	EMT
Michelle	Goldberg	OBS	Josh	Grossman	EMT
Jesse	Greenberg	OBS	Niranjan	Gunasekasan	EMT
Kunal	Gupta	OBS	Kunal	Gupta	EMT
Jonathan	Kusselson	OBS	Michael	Hall	EMT
John	Lalomia	OBS	Joslyn	Joseph	EMT
Elissa	Mallis	OBS	Bryan	Jow	EMT
Alicia	Morse	OBS	Nick	Kastango	EMT
Su Hong	Park	OBS	Andreana	Kripalani	EMT
Maggie	Parker	OBS	John	Lalomio	EMT
Kamal	Patel	OBS	Monica	Lucas	EMT
Nicole	Perella	OBS	Mike	Mazzei	EMT
Nicole	Perry	OBS	Hieu	Nguyen	EMT
Scott	Robinson	OBS	Yash	Niphadkar	EMT
Michael	Rubin	OBS	Tamara	Nisic	EMT
Andrew	Salim	OBS	Kumar	Shah	EMT
Kyle	Sharaf	OBS	Laura	Schafer	EMT
Alina	Sivriver	OBS	Alina	Sivriver	EMT
Burton	Tabaac	OBS	Katelyn	Stahl	EMT
Diana	Thyssen	OBS	Burton	Tabaac	EMT
Ashley	Vena	OBS	Adam	Winkler	EMT
Jessica	Williams	OBS	Jonathan	Wong	EMT
Jack	Xiong	OBS	Rebecca	Graziano	EMT
			Trina	Pal	EMT
			Christopher	Basillico	OBS
			Kester	Barrow	OBS
			Emily	Becker	OBS
			Sanjana	Bhatia	OBS
			Kristin	Bierbauer	OBS
			Adrian	Bruce	OBS
			Brian	Czornyj	OBS
			Stephanie	DeLuna	OBS
			Brian	Diskin	OBS
			Samantha	DisStefano	OBS
			Michael	Fedorka	OBS
			Christa	Frodella	OBS

Note: The Executive Board for 2006 is not listed on this roster

### 2007 Roster

Lauren	Anderson	EMT	Sanjana	Bhatia	OBS
Tyler	Espenlaub	EMT	Kristin	Bierbauer	OBS
Eileen	Mazzochette	EMT	Adrian	Bruce	OBS
Heather	Axelrod	EMT	Brian	Czornyj	OBS
Noah	Benton	EMT	Stephanie	DeLuna	OBS
Matthew	Caban	EMT	Brian	Diskin	OBS
Brian	Cheng	EMT	Samantha	DisStefano	OBS
David	Chiles	EMT	Michael	Fedorka	OBS
			Christa	Frodella	OBS

Chris	Hamilton	OBS	Andrew	Salim	OBS
Taha	Haque	OBS	Neal	Sankhla	OBS
Lauren	Harper	OBS	Jackson	Sengle	OBS
Amanda	Howland	OBS	Emily	Settle	OBS
Andrew	Isrealson	OBS	Nina	Siman	OBS
Andrew	Kump	OBS	Russell	Simpson	OBS
Jacqueline	Leva	OBS	Justin	Sonntag	OBS
Christopher	Lefferts	OBS	Christopher	Struby	OBS
Jennifer	Lin	OBS	Matthew	Stuart	OBS
Elissa	Mallis	OBS	Diana	Thyssen	OBS
Alessandra	Markides	OBS	Doug	Tremblay	OBS
Alicia	Morse	OBS	<b>2007 Roster (Continued)</b>		
Ian	Moskowitz	OBS	Ryan	Vernooy	OBS
Kevin	Naranjo	OBS	Mike	Wang	OBS
Scott	Novack	OBS	Jessica	Williams	OBS
Jennifer	O'Brien	OBS	Benjamin	Yang	OBS
Su Hong	Park	OBS	Yuanyuan	Yao	OBS
Komal	Patel	OBS			
Kevin	Patel	OBS			
Nicole	Perry	OBS			
Laurent	Preudhomme	OBS			
Martin	Razo	OBS			
Michael	Rubin	OBS			

**For More Information Please Visit our New Website**

<http://www.lehigh.edu/~inluems/>

**Contact Us:**

Contact: Alexander W. Bruner  
 Captain, Lehigh EMS  
 36 University Drive  
 Bethlehem, PA 18015  
[ems@lehigh.edu](mailto:ems@lehigh.edu)  
[awb304@lehigh.edu](mailto:awb304@lehigh.edu)



